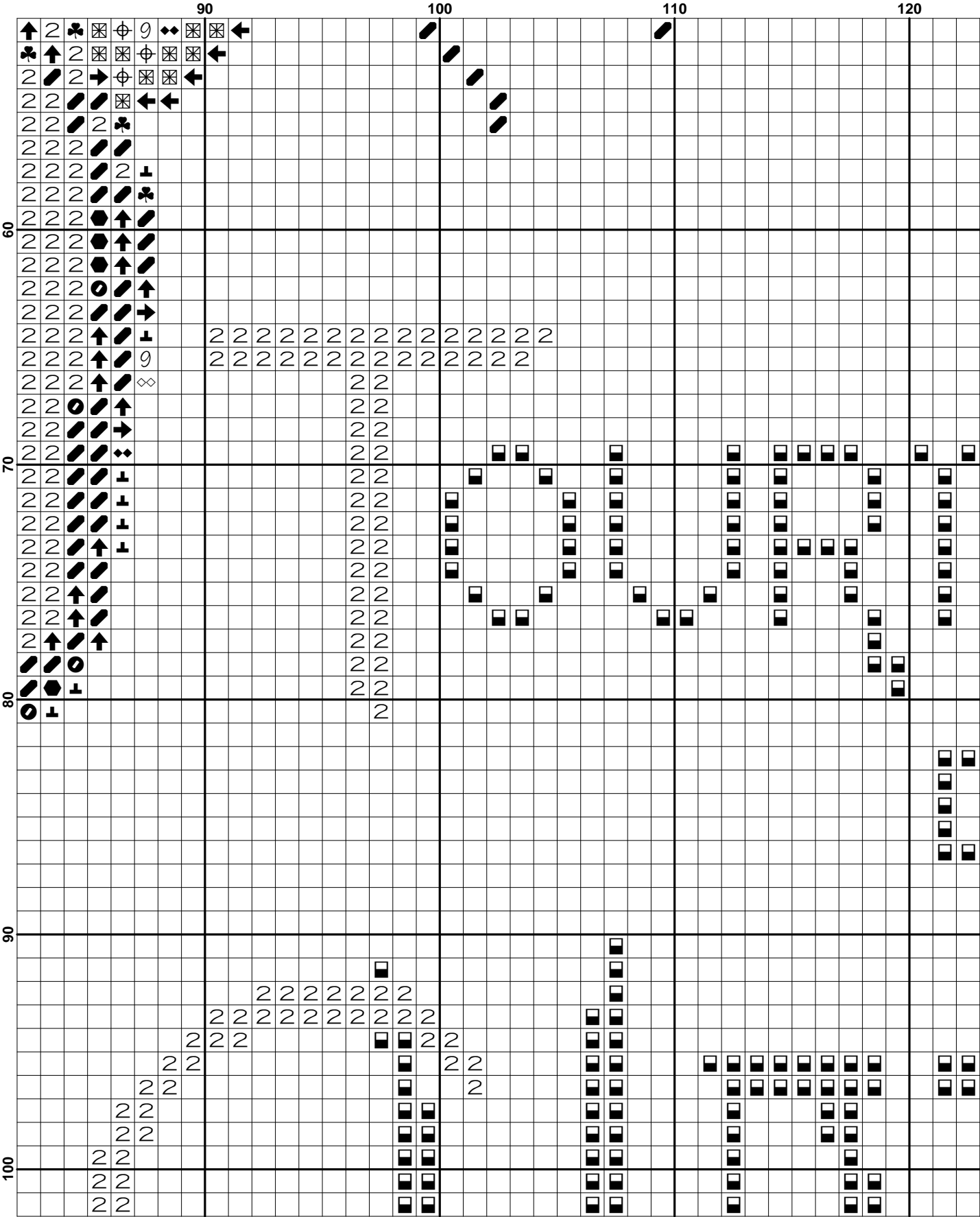
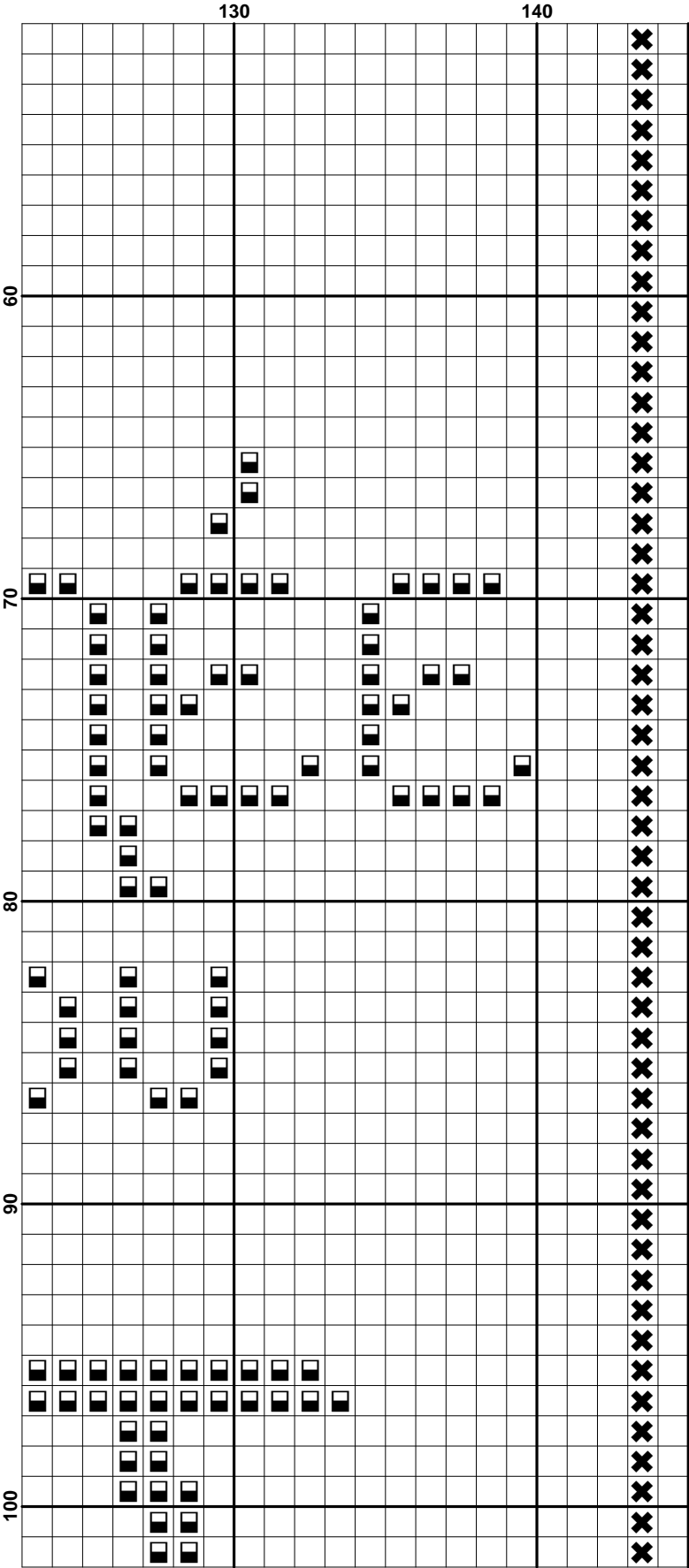


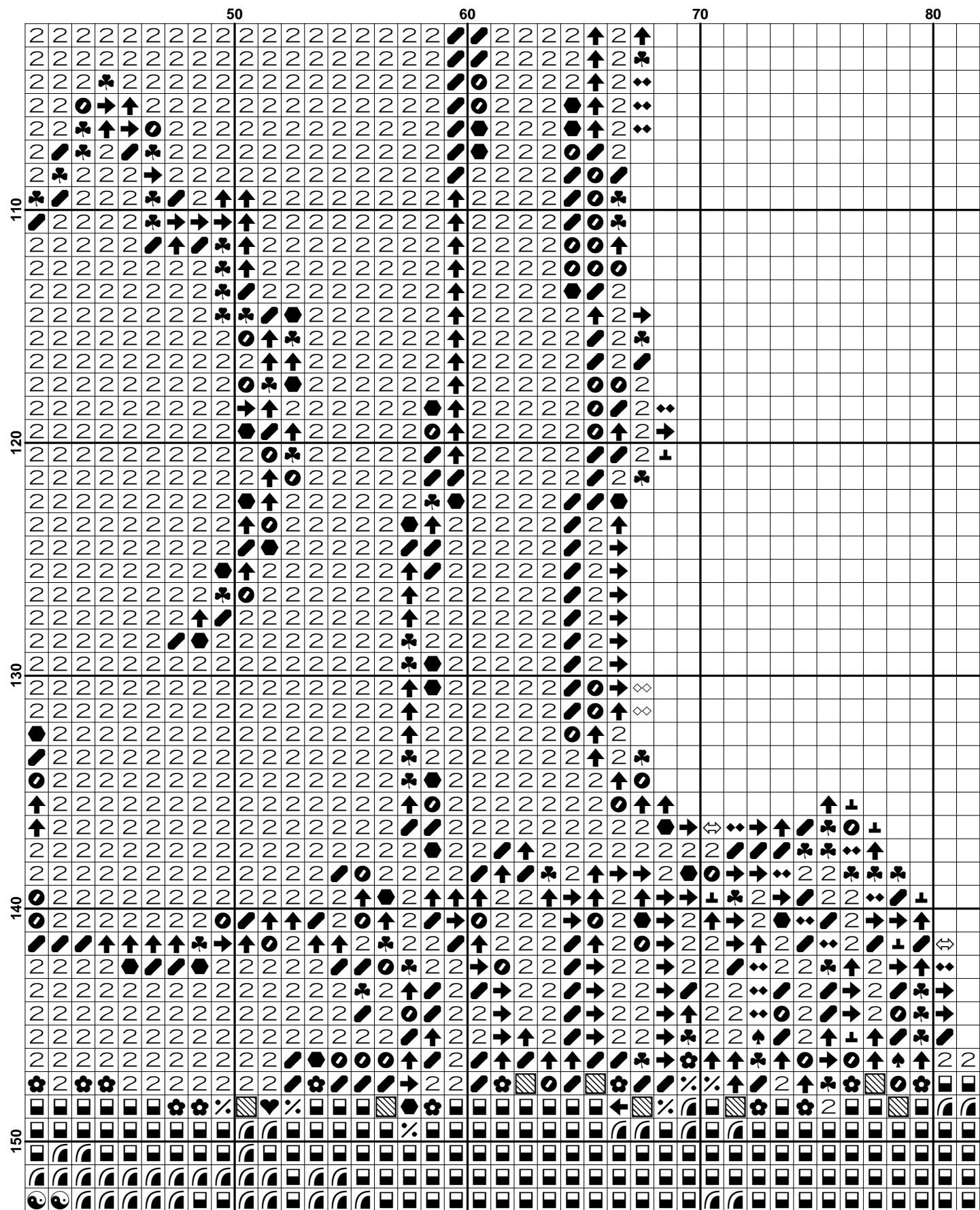
( 11 )

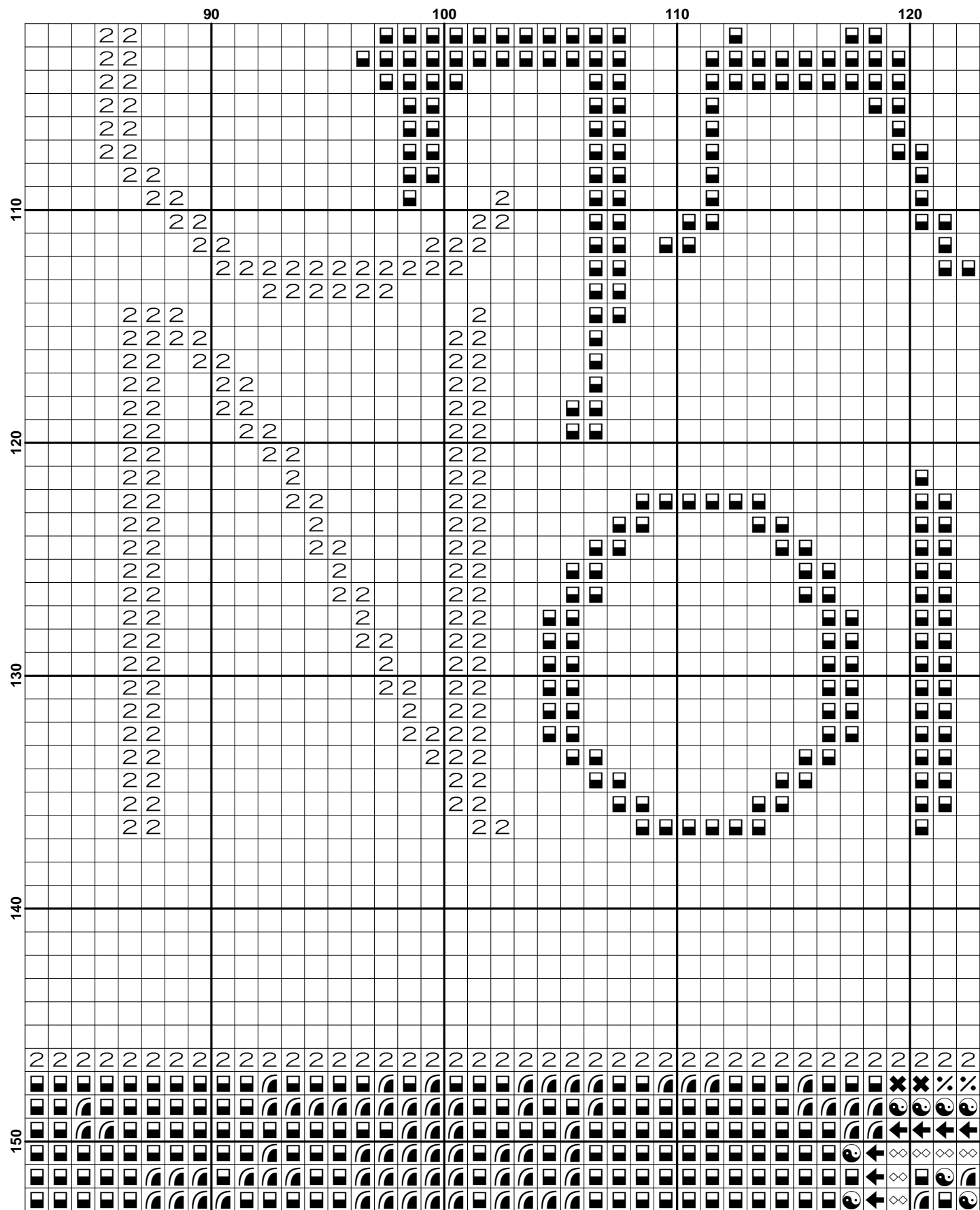


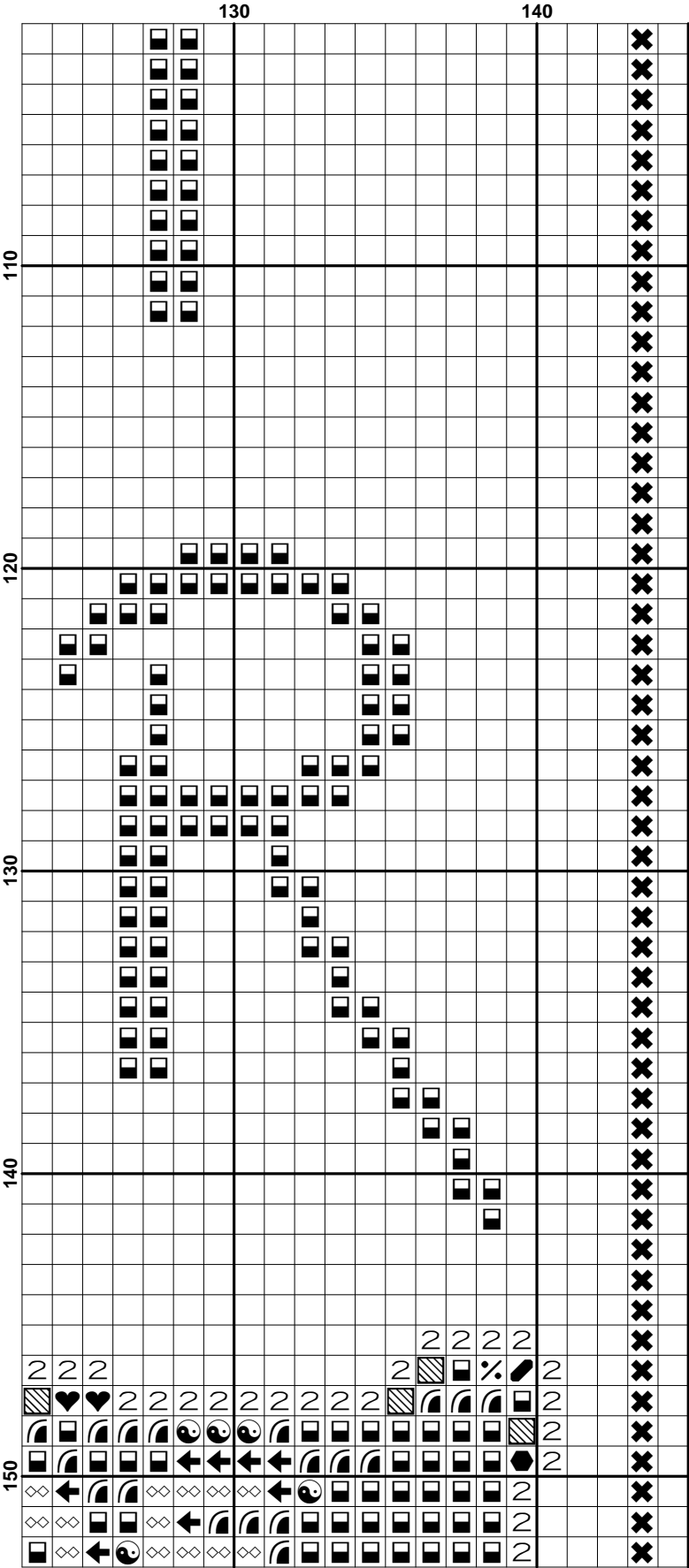




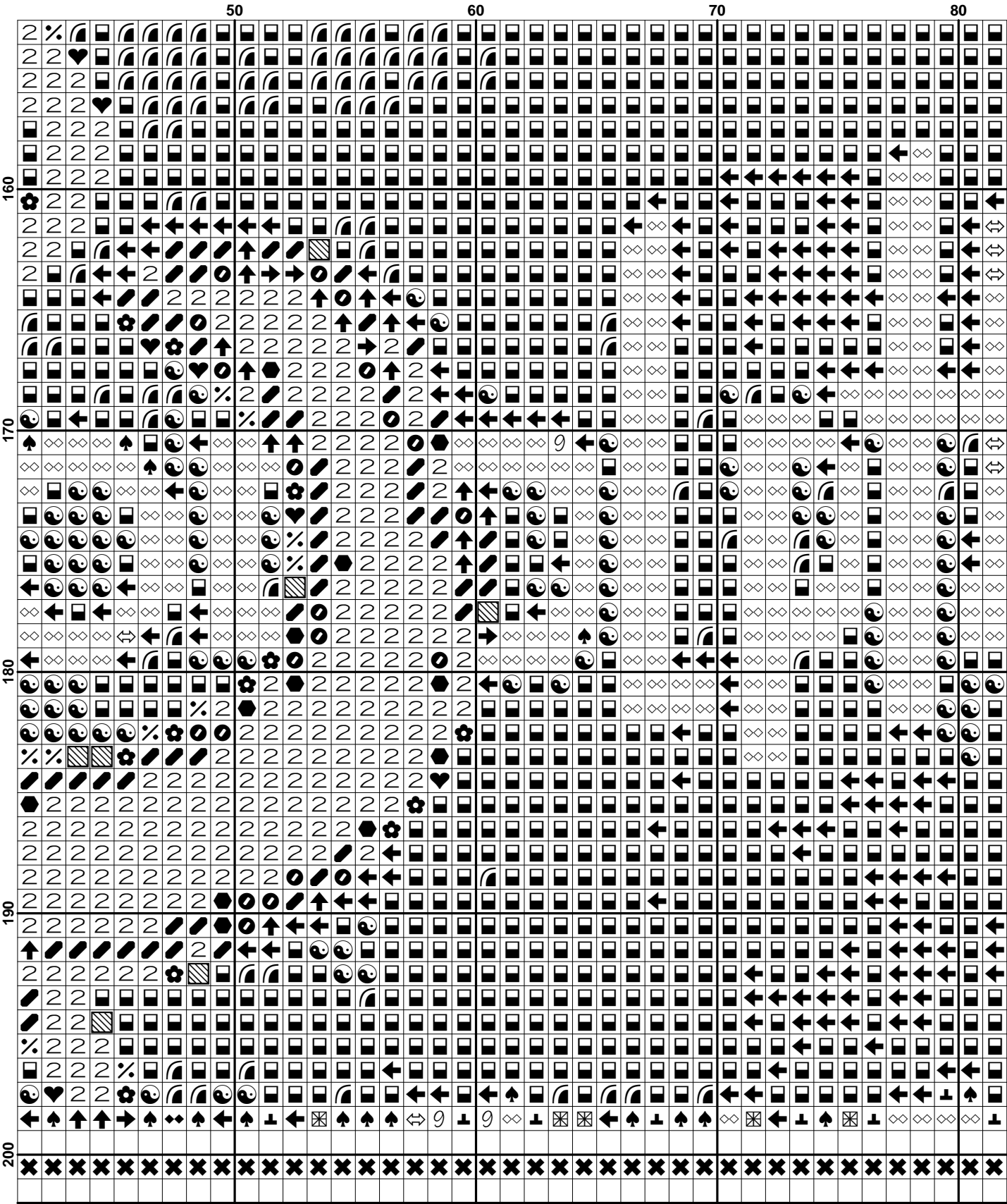
$$(13) \quad \frac{d}{dt} \left( \frac{\partial L}{\partial \dot{x}} \right) = \frac{\partial L}{\partial x}, \quad \frac{d}{dt} \left( \frac{\partial L}{\partial \dot{y}} \right) = \frac{\partial L}{\partial y}, \quad \frac{d}{dt} \left( \frac{\partial L}{\partial \dot{z}} \right) = \frac{\partial L}{\partial z}$$







[illegible]





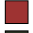

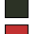
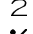


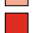

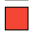

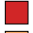















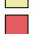

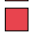












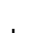
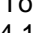
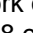
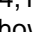
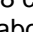


[illegible]



**Pattern Name:** Chat Noir by AlexandreTheophile Steinle  
**Company:** Artecy Cross Stitch  
**Copyright:** Artecy Cross Stitch  
**Fabric:** Aida 14, White  
 143w X 200h Stitches  
**Size(s):** 14 Count, 10-1/8w X 14-1/4h in  
 16 Count, 8-7/8w X 12-1/2h in  
 18 Count, 7-7/8w X 11h in

**Floss Used for Full Stitches:**

Symbol	Strands	Type	Number	Color
		2	DMC 150	Dusty Rose-UL VY DK
		2	DMC 304	Christmas Red-MD
		2	DMC 310	Black
		2	DMC 349	Coral-DK
		2	DMC 352	Coral-LT
		2	DMC 606	Bright Orange-Red
		2	DMC 608	Bright Orange
		2	DMC 666	Christmas Red-BRT
		2	DMC 722	Orange Spice-LT
		2	DMC 779	Cocoa-DK
		2	DMC 841	Beige Brown-LT
		2	DMC 902	Garnet-VY DK
		2	DMC 934	Black Avocado Green
		2	DMC 945	Tawny
		2	DMC 951	Tawny-LT
		2	DMC 3031	Mocha Brown-VY DK
		2	DMC 3078	Golden Yellow-VY LT
		2	DMC 3705	Melon-DK
		2	DMC 3801	Christmas Red-LT
		2	DMC 3823	Yellow-UL Pale
		2	DMC 3825	Pumpkin-Pale
		2	DMC 3856	Mahogany-UL VY LT
		2	DMC 3860	Cocoa
		2	DMC 3863	Mocha Beige-MD

\* To work out the size of the finished article, take the number of stitches and divide it by the count of your fabric (e.g 14,16,18 count aida etc) to get the size in inches. Times it by 2.5 to get centimetres. We have the sizes in inches shown above.

























\* You should begin at the centre of the pattern. To find the centre of the pattern it is just a matter of locating the arrows at the top and left hand side of the patterns, they are determined by dividing the stitch numbers wide and high in half. Where the two points meet that is the centre.

\* To put the pattern together look in the top and bottom corners. The page numbers in brackets ( ) show which page number it joins up to. Page 1 always starts at the top left hand side of the pattern.

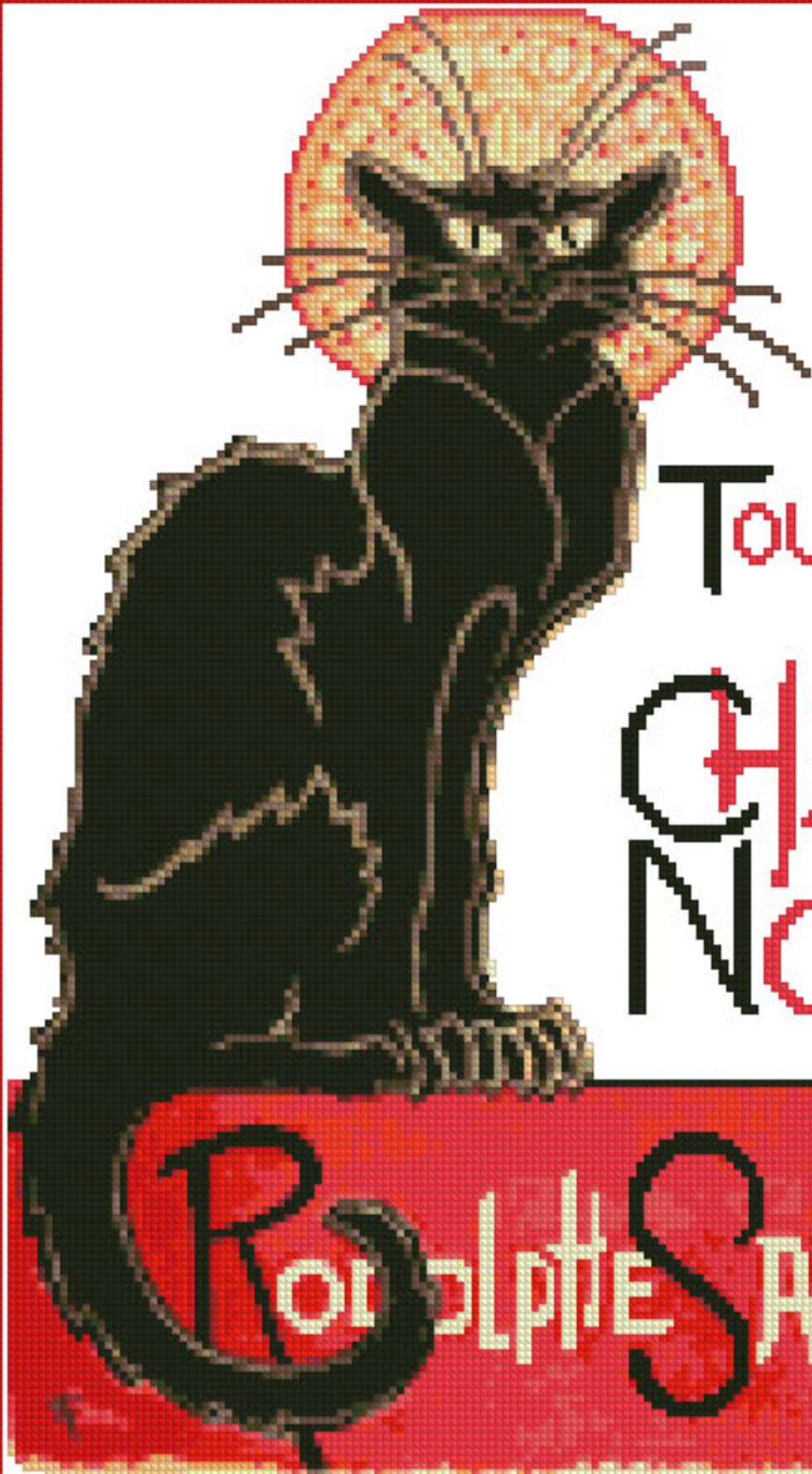
\* Pattern is for personal use only and is not to be sold,copied or redistributed in any form.Copyright of Artecy Cross Stitch.

\* 143 stitches wide by 200 stitches high, 24 colours used.

**Usage Summary****Strands Per Skein:** 6**Skein Length:** 313.0 in

Type	Number	Full	Half	Quarter	Petite	Back(in)	Str(in)	Spec(in)	French	Bead	Skein Est.
 DMC 150	150	38	0	0	0	0.0	0.0	0.0	0	0	1.000
 DMC 304	304	62	0	0	0	0.0	0.0	0.0	0	0	1.000
 DMC 310	310	6432	0	0	0	0.0	0.0	0.0	0	0	3.000
 DMC 349	349	90	0	0	0	0.0	0.0	0.0	0	0	1.000
 DMC 352	352	191	0	0	0	0.0	0.0	0.0	0	0	1.000
 DMC 606	606	828	0	0	0	0.0	0.0	0.0	0	0	1.000
 DMC 608	608	329	0	0	0	0.0	0.0	0.0	0	0	1.000
 DMC 666	666	1347	0	0	0	0.0	0.0	0.0	0	0	1.000
 DMC 722	722	278	0	0	0	0.0	0.0	0.0	0	0	1.000
 DMC 779	779	771	0	0	0	0.0	0.0	0.0	0	0	1.000
 DMC 841	841	176	0	0	0	0.0	0.0	0.0	0	0	1.000
 DMC 902	902	70	0	0	0	0.0	0.0	0.0	0	0	1.000
 DMC 934	934	196	0	0	0	0.0	0.0	0.0	0	0	1.000
 DMC 945	945	221	0	0	0	0.0	0.0	0.0	0	0	1.000
 DMC 951	951	34	0	0	0	0.0	0.0	0.0	0	0	1.000
 DMC 3031	3031	270	0	0	0	0.0	0.0	0.0	0	0	1.000
 DMC 3078	3078	217	0	0	0	0.0	0.0	0.0	0	0	1.000
 DMC 3705	3705	629	0	0	0	0.0	0.0	0.0	0	0	1.000
 DMC 3801	3801	2865	0	0	0	0.0	0.0	0.0	0	0	2.000
 DMC 3823	3823	758	0	0	0	0.0	0.0	0.0	0	0	1.000
 DMC 3825	3825	182	0	0	0	0.0	0.0	0.0	0	0	1.000
 DMC 3856	3856	238	0	0	0	0.0	0.0	0.0	0	0	1.000
 DMC 3860	3860	532	0	0	0	0.0	0.0	0.0	0	0	1.000
 DMC 3863	3863	189	0	0	0	0.0	0.0	0.0	0	0	1.000

\* Look for Skein Estimate (Est.) above to see how many skeins you need of each colour to complete the pattern.



TOURNÉE  
DU  
CHAT  
NOIR

DE  
RODOLPHE SALIS